

Kootenai County Conservative Voter Guide

**Kootenai County
Primary Election**

May 19, 2026

VOTE!

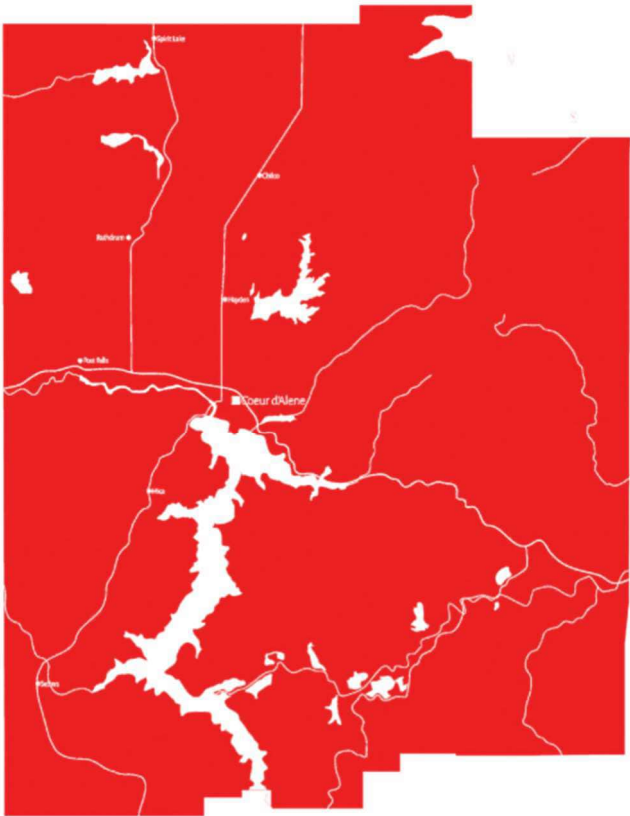
Official Publication

This is your official May 2026 Kootenai County Idaho Conservative Voter Guide for the upcoming Primary election. It is meant to help you cast your vote-by-mail or in-person ballot. Absentee ballots will be mailed to registered voters beginning Friday, May 3, 2026. Included in this guide are election deadlines, voter registration information, ballot measures and candidate statements.







We encourage all citizens to take an active part in the selection of our elected officials. Register – and vote!



Brent Regan
Chairman,
Kootenai County Republican Central Committee



Two Republican Groups. Only One Is Official & Transparent.

	 KCRCC	 North Idaho Republicans PAC
Official Status?	OFFICIAL Republican Party of Kootenai County Recognized by Idaho GOP & law	X NOT OFFICIAL No charter from Idaho GOP
Meetings?	Every 4th Tuesday Public welcome!	 Closed
Joining?	Run for precinct rep every 2 years. 74 elected precinct reps.	 Secret
Candidate Selection?	Public questionnaire. Members vote. Results posted.	 Obscure
Funding?	Public donations & Lincoln Day Dinner	 Dark money & shady PACs

**Want open, grassroots Republican leadership?
Visit KCRCC.org and get involved!**

May 19, 2026 Primary Election Information

Friday, May 8, 2026 is the voter registration deadline for the May 19 Election. After that, voters can register to vote at the polls on Election Day.



Go to voteidaho.gov to check your voter status, register to vote, or request an absentee ballot.

Absentee Voting

Absentee voting is available when applied for in advance of the deadline. Absentee ballots are available in person at the Kootenai County Elections Department (see below) or via online or downloadable forms for printing at:

<https://voteidaho.gov/casting-your-ballot/#absentee-voting>

Absentee request forms can be dropped off, mailed, emailed, or faxed to the Elections Department. The **last day** to request a mail-in absentee ballot is Friday, May 8, 2026 at 5 PM. Your absentee ballot must be turned in to the Elections Department by 8 PM on Tuesday, May 19, 2026. **Your vote will not be counted if the affidavit on the back of the return envelope is unsigned.**

In-Person Early Voting is Available at the County Elections Office

Starting: 8:00 AM on Monday, May 4
Until: 5:00 PM on Friday, May 15, 2026.



The Elections Department Office is open Monday through Friday, 8 AM to 5 PM at:

1808 N 3rd Street Coeur d'Alene, ID 83814

Find your polling place here 

On Voting Day, May 19, 2026

Polling places are open from 8 AM to 8 PM.

Polling Places may be changed up to 30 days prior to the upcoming election

Informed
Republican voters
know their precinct #

Do you
know yours



Scan QR Code or go to www.KootenaiFreedomCaucus.org

Contents

Voter Information	Page 3
Voter Guide Methodology	Page 4-5
Recommended Federal Candidates	
US Senator	Page 5
US Representative District 1	Page 5
Recommended State Candidates	
State Governor	Page 5
State Controller	Page 5
State Treasurer	Page 5
State Attorney General	Page 5
Recommended State Legislators	
District 2	Page 6-7
District 3	Page 7-8
District 4	Page 9-10
District 5	Page 10-12
Recommended County Offices	
Kootenai County Commissioner, Dist. 1	Page 13
Kootenai County Commissioner, Dist. 2	Page 14
Kootenai County Coroner	Page 15
Kootenai County Treasurer	Page 15-16
Kootenai County Clerk	Page 16-17
Recommended Measures	
Kootenai County Fire & Rescue	Page 18
Other Vetted Candidates	
Federal Candidates	Page 19
Kootenai County Commissioner D1, D2	Page 19-20
Kootenai County Treasurer	Page 21
Kootenai County Assessor	Page 21-23
Kootenai County Clerk	Page 23

Your Conservative voice in Kootenai County

Only this mark identifies the KCRCC Recommendation.



The mission of the KCRCC is to enhance freedom and prosperity by promoting fiscally and socially conservative candidates who will implement the Idaho Republican Party Platform as policy.

This publication paid for and produced by the Kootenai County Republican Central Committee, Treasurer John Howard

VOTER GUIDE METHODOLOGY

The following request for information was sent to every candidate in this guide:

The Kootenai County Republican Central Committee creates the Conservative Voter Guide, listing the vetted Republican candidates for the May 19 Primary Election in order to help inform voters. Your responses will be distributed by postal mail and digitally, to try to reach the majority of registered GOP voters living in Kootenai County.

This is your chance to let the voters know where you stand on the important issues of the day. To leave a more favorable impression for the voters, we highly recommend you respond to this questionnaire.

DEADLINE TO RESPOND IS MIDNIGHT, APRIL 6.

Please provide us with responses to the following inquiries:

1. Two to five sentences each (or 250 words total) on:

Why are you running for this office? • What makes you qualified to hold the position you are seeking? • If elected to this position, what improvements would you like to achieve?

2. Please offer a short opinion (500 words total) on a few of the following topics:

Legislators: School Voucher – School Choice • Immigration Issues • Medicaid Expansion • Absentee Voting • Election Integrity • Drawer Vetoes • Fairest Form of Taxes • Land Use Laws

County Offices: Fiscal Responsibility in your Department • Growth in the County • Transit Center • Election Integrity • Data Centers • Fairest Form of Taxes • Aquifer Protection

As part of the Rating and Vetting process, we asked the candidates to respond to the questions above. Those candidates' statements, and the offices they are running for, are listed herein for your information. Those who did not respond to this questionnaire by press deadline are not listed here but will still appear on your ballot, as well as any Federal or State offices where the candidate is running unopposed.

We hope this gives you, the voter, a better insight into the character of the candidates on your ballot.

You should consider how the candidate responded to these issues when making your informed decision.

Where applicable, certain candidate profiles will display a GOP Recommended logo from the Kootenai County Republican Central Committee.

The KCRCC Candidate Recommendation Process involves *Transparency and Due Diligence*

The candidates in this Voter Guide participated in the Kootenai County Republican Central Committee's signature Vetting Process, a model for the state. These candidates were interviewed, background checked, and invited to attend "meet-and-greets" with the KCRCC Precinct Committeemen (PCs) to provide pertinent information on issues most important to you, the voter. The KCRCC then met in private session to discuss and debate each candidate, and then voted by secret ballot. The candidate that received the majority vote received the recommendation. Some who did not earn the KCRCC Recommendation chose to withdraw, while others did not (see back page for more information). Between the PCs meeting with the candidates, the report from the Vetting Committee, and the PC's first-hand knowledge of the candidates' conservative character, the KCRCC was able to recommend 26 candidates for this election and are included in this **Conservative Voter Guide**.

Non-recommended candidates appear by office, in the order in which their responses were received. The candidates who chose not to participate in our Rating and Vetting Process were not included.

The following candidates received the KCRCC Recommendation

Jim Risch

Running for: US Senator
Email: info@senatorrisch.com
Phone: 208-506-5500
Party Affiliation: Republican



Vetting Questionnaire:
<https://www.kootenaigop.org/jim-risch>

Campaign Website:
<http://senatorrisch.com>

X:
Risch4Idaho

Brandon Woolf

Running for: State Controller
Email:
Phone:
Party Affiliation: Republican



Vetting Questionnaire:
<https://www.kootenaigop.org/brandon-woolf>

Campaign Website:

X:

Russ Fulcher

Running for: US House of Representatives, District 1
Email: rfulcher@overarch.com
Phone: (208) 249-2800
Party Affiliation: Republican



Vetting Questionnaire:
<https://www.kootenaigop.org/russ-fulcher>

Campaign Website:
<http://www.russfulcher.com>

X:
russfulcher

Julie Ellsworth

Running for: State Treasurer
Email:
Phone:
Party Affiliation: Republican



Campaign Website:
<https://www.ellsworthfortreasurer.com/>

X:

Mark Fitzpatrick

Running for: Governor
Email: Mark@MarkFitzIdaho.com
Phone: (208) 999-0453
Party Affiliation: Republican



Vetting Questionnaire:
<https://www.kootenaigop.org/mark-fitzpatrick>

Campaign Website:
<http://MarkFitzIdaho.com>

X:
oldstatemark

Raul Labrador

Running for: Attorney General
Email: info@raullabrador.com
Phone: (208) 965-4637
Party Affiliation: Republican



Vetting Questionnaire:
<https://www.kootenaigop.org/raul-labrador>

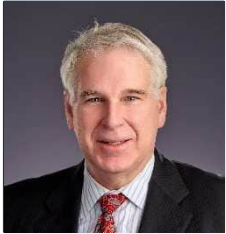
Campaign Website:
<http://www.raullabrador.com/>

X:
Raul_Labrador

The following State Legislative candidates received the KCRCC Recommendation

For information on an incumbent's voting record, go to: <https://gemstatechronicle.com/scorecard-explorer>

Phil Hart



Running for: Idaho State Senate, Legislative District 2

Email: phil.hart@startmail.com

Phone: (208) 332-1345

Party Affiliation: Republican



Answer to Question 1, p. 3

I believe that the "Government that governs least, governs best." Many people also believe in this principle promoted by Thomas Jefferson, but few actually had the courage or the strength to implement it into their actions, into their voting record or even into public policy.

I have previously served eight years in the Idaho House of Representatives and now four years in the State Senate. My conservative voting record has been consistent over all of these years.

Answer to Question 2, p. 3

I believe that parents have the responsibility and ultimate authority to educate their children. This is a God-given responsibility and cannot be taken away. Parents may choose to delegate that to a school of their choice, which may be the public schools or any other school. Since government is taxing people to pay for the education of our young people, I believe that those tax dollars ought to follow the student to the school of the parent's choice.

All nations have borders and the borders of the United States of American should be guarded and respected. Only those people who have entered our country legally should be here. Those who have illegally come to the USA need to return to where they came from and seek permission to return to the USA from the country of their origin.

I have toured our international border nine times, twice at the Canadian border and seven times at the Mexican border. This issue is of great importance to me. I believe we need temporary seasonal labor, and specialized workers that may not be present in the USA. But all of these workers need to be in the country legally. Our dependance on illegal workers needs to end. This is a Washington D.C. issue, but the states should do what we can to resolve this problem.

The fairest form of taxes is the one where the tax is paid and the benefit for having paid the tax is immediately realized. The Gas Tax is the best example of this. You pay the tax at the gas pump, and then immediately drive on the roads that were built with these taxes.

Real property benefits from property taxes, and each property needs to pay for the benefit received.

The two worst taxes are the inflation tax and the income tax. The inflation tax is levied when the money supply is expanded, and the purchasing power of the dollar is diminished. No one ever voted for this tax, but we all pay it. Inflation is actually a form of theft where those doing the stealing are the ones who receive the immediate benefit from the expanded money supply. This does not include anyone who is in my circle of friends or acquaintances.

The income tax is the second worst tax as those monies go into a giant bucket and you may or may not receive a benefit from it.

A tax that would be easy to pay and could fund all levels of government would be a transaction tax that taxes all money as it moves through the banking system. Studies have shown that a tax rate of just 0.2% could fund all levels of government with all other taxes eliminated.

Heather Scott



Running for: Idaho State Representative, Seat 2A

Email: voteheatherscott@gmail.com

Phone: (208) 920-3120

Party Affiliation: Republican



Answer to Question 1, p. 3

I am currently the Idaho State House Representative for District 2, Seat A. I have been in this position for the last four years representing portions of Bonner and Kootenai counties as well as all of Shoshone, Benewah and Clearwater counties. I am currently the Vice chairman of the House State Affairs Committee and the House Chairman of the Idaho Freedom Caucus. Prior to that and before redistricting, I served as the Idaho State House Representative for District 1, Seat A for eight years representing Bonner and Boundary Counties. I also served as the Spirit Valley Precinct committeeman for the Bonner County Republican Central Committee from 2015-2022. I am a strong conservative and my voting record and bills I have supported reflects that. I also served on the 2025 Child Custody & Domestic Relations Task Force and the 2025 DOGE interim legislative committees from June thru December. I am in good standing with Citizen's Alliance of Idaho whose pledge is inspired by the US and Idaho Constitutions.

Answer to Question 2, p. 3

School choice empowers parents, not bloated bureaucracies, to decide what education is best for their children. Funding should follow the student, allowing families access to better opportunities and fostering competition that improves all schools. Education works best when it's driven by families, not government systems.

Immigration Issues

A nation must have secure borders and enforce its laws to remain sovereign and safe. Illegal entry undermines wages, public resources, and the rule of law. This year our Idaho Freedom Caucus ran or supported over 6 bills to address illegal immigration in Idaho.

Medicaid expansion increases long-term government dependency and strains already tight state budgets. It often crowds out private healthcare options and shifts costs onto taxpayers. Idaho is already spending billions on healthcare and the costs continue to rise. It is not sustainable.

Absentee voting should be limited to those who truly need it, with strong safeguards to prevent fraud and abuse.

The fairest tax system is one with limited exemptions for special groups and one that treats everyone and every entity equal.

☑ Dale Hawkins



Running for: Idaho State Representative, Seat 2B

Email: dalehawkinsforidaho@gmail.com

Phone: (208) 568-1275

Party Affiliation: Republican



Answer to Question 1, p. 3

After serving four years as your representative in Legislative District 2, I believe there is still more work to do. I would like to continue the fight to give Idaho folks more educational opportunities. I also want to continue the fight to push back against Idaho's apparent addiction to illegal labor. As a member of the Idaho Freedom Caucus, I will continue to fight to reduce government, and vote to cut spending wherever possible.

Answer to Question 2, p. 3

Let me be clear, Idaho does not have a voucher program. Idaho has a tax credit school choice program that allows parents to educate their children as they see fit outside of the state brick and mortar system. I believe we need to grow this program to give more parents more choice in guiding the direction of the education of their children.

Illegal immigration is a large problem in Idaho, especially in the southern part of the state. Certain industries have become addicted to cheap labor. This is not only a burden on the Idaho taxpayer; we are watching new industries take advantage of this cheap labor, driving wages down and removing many from the ability to competitively bid. All the while trying to justify why they are breaking the law. This must stop. With a coalition of representatives, we ran several bills trying to deal with this situation, and they were all prevented from passing. Large lobby influences and weak legislators would be to blame for this. We must prevail. We certainly don't want what has happened in California and other states to happen here in Idaho. We must make sure that Idaho never becomes a sanctuary state.

☑ Doug Okuniewicz



Running for: Idaho State Senate, Legislative District 3

Email: votedougo@gmail.com

Phone: (208) 918-1495

Party Affiliation: Republican



Answer to Question 1, p. 3

I'm running out of a sense of responsibility to our community, our state, and our children's future. We need people in public office who will adhere to the principles laid out in the Idaho and U.S. Constitutions who are willing to represent the conservative values of the people living in District 3. If re-elected, I hope that my legislative experience and relationships with fellow legislators will help me enact more policies that align with the values and principles laid down by the founders of this great nation.

Answer to Question 2, p. 3

Presently, some of the issues facing the legislature include:

1. School Choice: I support school choice.
2. Illegal immigration: I am opposed to illegal immigration, driver's licenses for illegals, and any social service-related expenditures for illegals. Immigration needs to occur via legal channels.
3. Medicaid expansion: Not surprisingly, Medicaid expansion has cost taxpayers far more than initially promised by liberal activists. This year I voted for a substantial cut in these unsustainable services.
4. Absentee voting: Unrestricted absentee voting creates distrust in our electoral system. My preference is a system wherein everyone votes in person. However, I am sensitive to active duty military, etc.
5. Election integrity: Election integrity is paramount to our system of government. Without it, everything breaks down.
6. Chairmen holding bills: I think it may be appropriate if a majority of the Republican caucus for a respective house (senate or house) votes to hear a bill, that it should be heard in committee. The committee members, including the chair would still have the ability to vote the way they wished, but the bill would be heard nonetheless.

☑ **Vito Barbieri**



Running for: Idaho State Representative, Seat 3A

Email: barvito@tds.net
Phone: (208) 620-0873
Party Affiliation: Republican



Answer to Question 1, p. 3

After 16 years serving the people of North Idaho, I still have some work to do. The years spent in Boise have served to establish relationships, understand administrative rules dynamics, and the legislative process in general. There is still much work to be done re-establishing the legislature as an EQUAL branch of government, the primary focus of which is our ability to review administrative rules to assure that they comport with the intent of the legislature in having passed the law that the rule is to administer. That is not to discount the legislature's role in continuing to cut bloated agency budgets. The representatives and senators from the North are essential to keeping Idaho a conservative state, putting the taxpayer ahead of any concern for feeding the administrative state with more money and power. That ideology is not present in many sectors of Idaho.

Answer to Question 2, p. 3

We have made great strides in the school choice area.

We were unsuccessful this year in verifying all employees as United States citizens. I'm sure the work will continue in this area.

I used to think that absentee voting was a great convenience, but seeing the abuses nationwide I've changed my mind. I think that elections should be one day, counted that day, and announced that evening. (Of course, allowances must be made for military personnel, but with very strict control of this exception.)

I think Representative Joe Alfieri has made great strides in working on election integrity. What is wrong with keeping all ballots on paper, and hand counting them?

Regarding 'drawer vetoes' you have to understand that this power is important to the body as a whole. I thought this process was inappropriate when I first came down to Boise but have learned that there are several issues that will not see the light of day and yet votes on imperfect bills would be forced on the body. This is a very important power, even though it is sometimes abused (as are many powers elsewhere!)

Fairest form of taxes!? Property tax is the worst! Income tax comes in a very close second! Consumption tax, administered evenly, is the best form of tax.

Land use laws: Very ticklish area, right? Out of state corporations buying homes to serve as rentals? Development of mini-homes on smaller plots of land will result in more density and the much maligned '15 minute cities'. On the other hand, is there anything we can do to lower the threshold for young marrieds to buy a home?

☑ **Jordan Redman**



Running for: Idaho State Representative, Seat 3B

Email: jordan@redmanforidaho.us
Phone: (208) 252-5070
Party Affiliation: Republican



Answer to Question 1, p. 3

I am running for my 3rd term as a state representative in order to continue the work I am doing for a free and conservative Idaho. I am a North Idaho native, born-again believer in Jesus Christ, own businesses in Idaho, and am raising my 6 children along with my wife here. I love our community and will continue to fight for individual liberty, state sovereignty, and fiscal conservatism.

Answer to Question 2, p. 3

During last few legislative sessions I have worked on legislation regarding private property rights, Medicaid program reforms and immigration issues. I believe in having a fiscally conservative, accountable government that respects the individual rights of its citizens.

In my work on private property rights I have worked to allow property owners to use their land as it best fits their needs including the ability to rent their property for any length of time, to have an accessory dwelling unit (ADU/guest house) on their property and to allow for smaller lot sizes in city limits, without overburdensome government in the way.

I have worked on Medicaid program reforms to increase accountability and decrease fraud, waste and abuse in the program. I am in favor of a Medicaid Expansion (also referred to Able-Bodied Adult Medicaid) repeal in order to allow for more resources to go toward the disabled and children in the program. I have worked to advance work requirements for the able-bodied adult Medicaid population, managed care and other cost-containment measures in the program.

I have also worked on legislation that strengthens our border and decreases the illegal immigration issue that our state faces. This is an issue that is hard-fought in the Idaho legislature and I will be continuing the fight.

☑ **Ben Toews**



Running for: Idaho State Senate,
Legislative District 4

Email: ben4idaho@gmail.com
Phone: (208) 755-3213
Party Affiliation: Republican



Answer to Question 1, p. 3

I am seeking this office to serve the people of my district by championing legislation that is important to them and voting based on conservative Christian Republican values. I've served two terms already and learned how to successfully draft and sponsor legislation. My position in Senate leadership in my second term gave me the opportunity to be a strong voice for my constituents in the Idaho Senate. My top goal is to change the rules that allow chairman to drawer important legislation. I have drafted a rule change which I call the Honor Rule that would require a hearing for any legislation that passes the opposite chamber with a 2/3 majority. Forcing a hearing on this legislation honors both the work of the opposite body and the will of the people.

Answer to Question 2, p. 3

School choice was one of my top priorities when I was first elected to office and the Refundable Education Tax Credit was passed into law last year. I cosponsored this legislation and will work to expand it's impact by working to increase the funding for this important program.

Immigration is a top issue among voters and I will work to support immigration reform in the coming term to make sure that illegal immigrants are excluded from government programs, law enforcement is required to assist ICE in deportations and employers utilize E-Verify to ensure they aren't hiring illegal immigrants.

I will continue to work to deregulate land use laws to make sure that people's property rights are upheld and they can choose what to do with their own property. We have seen growing restrictions that stop free market solutions to the next generation having the opportunity for homeownership which has resulted in the average age of first-time homebuyers to be over 40. Homeownership is foundational to building strong communities and making sure the next generation has the ability to build wealth and healthy families.

☑ **Joe Alfieri**



Running for: Idaho State Representative,
Seat 4A

Email: joealfieri@gmail.com
Phone: (208) 699-0021
Party Affiliation: Republican



Answer to Question 1, p. 3

It is my great honor to serve in the Idaho House of Representatives, for district 4, seat A. While the work we do in Boise is important, it is critical that Kootenai county continues its tradition of having a strong, conservative and family oriented central committee. In recent years, there has been an attempt to dilute these values in the central committee, and it is therefore of critical importance to elect true conservatives to represent the people of the county and to reinforce our Republican values.

Answer to Question 2, p. 3

SCHOOL CHOICE. I think it's safe to say that with the passage of the Parental Choice Tax Credit Program (H93) in 2025, which I voted for, that Idaho has the best options for school choice in the nation. The program has so many applicants, that if it were a school district it would be the third largest in the state. The right of parents to decide how to educate their children is fundamental, and H93 allows parents to seek educational opportunities that best meet their children's needs.

IMMIGRATION. If America is to survive as a nation, we must get a handle on our illegal immigration problem. We cannot have a policy that allows everyone to enter, regardless of the value they bring to our nation. And we certainly can not allow illegal immigrants to feed from the public trough, and to remain separate from the rest of society. Immigration has most benefited America through assimilation, when the multitudes from overseas truly became Americans.

The cost of illegal immigration, in driving wages down, health care, education, housing costs upward, and the societal impact of high crime must not continue.

DRAWER VETOES. It is unconscionable that any committee chairman can have such power. When a chairman refuses to allow a bill to be heard, he wields more power than the Governor. When the Governor vetoes a bill, he is still subject to an override by the legislature. Committee Chairman face no such action.

TAXES. The fairest form of taxation is a consumption tax. Buy an item, and pay tax on it. Property tax and income tax should be eliminated, and all government programs should be funded through a consumption tax.

MEDICAID EXPANSION. This program has spiraled out of control since the initiative that created it passed in 2018. The cost of the program is many times what was originally projected, and now consumes the largest single part of the state budget. It must be reigned if we are to avoid fiscal catastrophe.

ABSENTEE VOTING / ELECTION INTEGRITY. I have been one of the strongest proponents of election integrity issues before and

during my time in the legislature. I have advocated that absentee ballots be limited to people, such as the military or those confined or restricted by work requirements. As the President has said, absentee ballots are not to be used as a convenience, and almost all voting should be done in person, on one day.

While there have been noticeable improvements in our voter ID and absentee ballot process, there is more to be done.

☑ Elaine Price



Running for: Idaho State Representative, Seat 4B

Email: elaineld4r@protonmail.com

Phone: (208) 654-3228

Party Affiliation: Republican



Answer to Question 1, p. 3

I am seeking re-election because North Idaho needs a strong, steady voice in Boise who understands our community and will stand firmly for its traditional values. I am qualified because I come from the real world, not a political pipeline. As a small business owner, mother, and second-term legislator, I have built a record of protecting children, defending parental rights, and being responsible with taxpayer dollars. I have served most recently on the Local Government and Appropriations committees and am a proud member of the Idaho Freedom Caucus. My oldest son, Aaron, passed away during my first term in the House of Representatives. He was 31 and a veteran. My faith in our Lord Jesus Christ gave me the strength to carry on in both my personal life and my commitment to serve North Idaho in Boise. With God as my North Star, I am seeking re-election not for power or position, but to continue to put North Idaho's voice and values in Boise. When re-elected, I will continue strengthening families, supporting educational freedom and our veterans, protecting constitutional rights, and ensuring Idaho government remains accountable, disciplined, and responsive to the people it serves.

Answer to Question 2, p. 3

Growth in Kootenai County must be handled with more discipline and more respect for the people who already live here. Infrastructure, roads, emergency services, and schools should not be an afterthought. Growth should serve the community, not overwhelm it.

Election integrity is essential to public trust. Idaho should continue requiring secure voting practices, voter identification, and strong protections against fraud. The right to vote matters, and so does the public's confidence that every legal vote is counted fairly.

The fairest form of taxes is one that is limited, and respectful of the people who earn the money in the first place. Being on the Joint Finance and Appropriations committee has given me a new understanding of the State budget. I have consistently voted to try to keep the government in its proper role. Government should live within its means, focus on core functions, and avoid shifting more burden onto working families, homeowners, and small businesses.

School choice is about restoring the proper order in education, parents first, not systems. I support expanding school choice options, so funding follows the student to show that families have real authority over their children's education. When parents have options, schools improve, and students benefit.

On immigration, the issue is simple, we are a nation of laws. Legal immigration should be respected and encouraged, but illegal immigration undermines fairness, strains resources, and weakens trust in government. Laws must be enforced consistently.

I will continue working to reform the public school funding formula to give local schools more discretion to meet students' needs while preserving transparency. I co-sponsored legislation that became law to protect children from online pornography and have supported measures that strengthen parental rights in all aspects of their children's lives. Understanding budgets and fighting to lower taxes will continue to be a priority. It's been an honor to serve the people of Idaho and I will strive to be your voice in Boise.

☑ Carl Bjerke



Running for: Idaho State Senate, Legislative District 5

Email: cjbjerke@reagan.com

Phone: (208) 704-0925

Party Affiliation: Republican



Answer to Question 1, p. 3

I am running for re-election to the Idaho State Senate, District 5, because I believe the people of Idaho deserve principled representation that puts citizens ahead of government growth and overreach. As the incumbent senator for District 5, serving my second term, I remain committed to defending individual liberty, upholding the Constitution, and ensuring government stays within its proper role. My motivation is rooted in faith, service, and a desire to improve the lives of the people I represent.

I am qualified for this position because my life and career have been built on public service, leadership, and practical problem-solving. As a retired Deputy Fire Chief, I spent decades making difficult decisions, managing people and resources, and helping others through some of the hardest moments of their lives. That experience shaped my commitment to strong public safety, effective emergency response, and ensuring communities have the support they need. My service in the Senate, including my work on the Joint Finance-Appropriations Committee and as vice chair of the Senate Health and Welfare Committee, has deepened my understanding of the healthcare challenges families face and the financial strain many Idaho households are under. It has also reinforced the importance of balancing budgets responsibly while protecting essential services and recognizing financial pressures facing Idaho families.

If re-elected, I want to help improve public safety, increase access to medical care, and advance practical, responsible policies that

make life safer, more affordable, and more secure for the people of District 5 and all Idahoans.

Answer to Question 2, p. 3

Of the topics presented, I would like to focus on the fairness of our tax structure and the impact of land use laws on housing affordability. Idaho relies on a balanced tax structure built primarily around property taxes, sales taxes, and income taxes. I believe that this approach is sound, but it must be continually evaluated to ensure we are not placing too much of the burden on working families and those living on fixed incomes.

I understand why Idahoans are frustrated with property taxes. For many families, especially seniors and others on fixed incomes, rising assessments can make it feel like homeownership is never secure. A person may own a home, but if the tax burden keeps climbing with valuations, their ability to remain there is threatened. At the same time, I do not believe the answer is to eliminate one tax and shift that burden somewhere else without considering the consequences. A tax system that leans too heavily on consumption taxes can create unfairness by placing a disproportionate burden on middle-income and lower-income households.

That is why I believe we need a measured approach. We should work to relieve pressure on property taxpayers, especially homeowners squeezed by valuation increases, while preserving a balanced tax structure that does not fund government on the backs of the middle class. Tax policy should be stable, understandable, and fair. It should avoid dramatic swings that can destabilize family budgets, local government, or the economy. We also need to recognize the complexity of changing tax policy in a state with over 1,000 taxing districts, cities, and counties that rely on property tax revenue to provide essential local services. When we make changes at the state level, we need to consider a range of stakeholders, involve local government, and remain mindful of unintended consequences if we move too quickly. We should be willing to try thoughtful reforms and make corrections when something does not hit-the-mark. Lawmaking is often a dynamic process, and good policy requires both caution and humility.

Land use policy is closely tied to this same problem. In a growing state like Idaho, housing supply, lot availability, infrastructure, and regulatory decisions all affect whether young families, workers, first responders, nurses, and teachers can afford to live in the communities that depend on them. If we are serious about affordability, we have to examine whether our current land use framework is helping or hindering the development of attainable housing. But we also need to be careful. I do not support heavy-handed social engineering or government policies that distort the free market in ways that create new problems while trying to solve old ones.

My approach is to seek balance: protect property owners, respect local communities, encourage responsible growth, and support housing policies that increase affordability and availability without undermining private property rights or market stability. Idaho's challenge is not just to grow, but to grow wisely so that the next generation of Idahoans can still afford to build a life here.

✓ **Ron Mendive**



Running for: Idaho State Representative, Seat 5A

Email: rjmfarm88@gmail.com

Phone: (208) 667-9330

Party Affiliation: Republican



Answer to Question 1, p. 3

I have had the privilege of serving in this office for seven terms. There is no substitute for experience and the institutional knowledge gained from serving in this capacity.

This last session Senator Bjerke and I were successful in spearheading legislation that allows parents to teach their children to drive and obtain a driver's license.

I have always been opposed to property taxes on your primary residence. This is a tax levied on an unrealized capital gain. As your house appreciates in value you pay higher taxes each year even though the new value doesn't mean anything unless you sell your home. Many people on a fixed income will ultimately be taxed out of their home even though "they thought they owned it". Currently a growing number of legislators oppose this type of taxation and I am cautiously optimistic that we will find a solution.

Answer to Question 2, p. 3

School Choice: I have been an advocate for parental choice in education since I was elected into the Legislature. Last year we were able to pass the Tax credit scholarship into law.

Immigration: Our nation became great by allowing legal immigration and through natural born children of American citizens. Recent open border policies have put our Republic in serious jeopardy. If you don't have a border, you do not have a country.

Medicaid Expansion: Medicaid was expanded through voter initiative. Americans have always been a generous people, however we must be careful to give a hand up, not necessarily a hand out. The previous administration would not allow the state to require able-bodied Americans to work for their subsidies. Health and Welfare is by far our largest budget. Welfare fraud is a huge problem and we must do all we can to prevent it. While most of the H&W budget is Federally subsidized, our Federal deficit due to excessive spending is unsustainable.

Absentee voting: I believe everyone that is able, should vote in person on election day. Absentee voting should only be allowed when a person is unable to go to the polls to vote. Widespread mail-in voting increases the opportunity for voter fraud.

Election Integrity must be maintained by requiring approved identification for everyone that is attempting to vote.

As a committee Chairman I have the ability to hold bills in my drawer. Legislators draft numerous bills for various reasons. If a Legislator wants to make a statement, they can introduce a bill as a personal bill and get it printed. If it is a good proposal, they will have no trouble gaining support and thus put pressure on a

Chairman to hear it. Some ideas are just not ready for prime time.

I think a sales tax is the fairest form of tax. If times are difficult a taxpayer can reduce their tax burden by purchasing beans instead of steak.

☑ Tony Wisniewski



Running for: Idaho State Representative, Seat 5B

Email: precinct63@gmail.com

Phone: (208) 889-3437

Party Affiliation: Republican



Answer to Question 1, p. 3

I am running for reelection because I wish to keep government confined to those functions that are within the proper role of government. The cost of government has far outpaced the increase in inflation and population growth.

I started my involvement in the political arena by becoming a precinct committeeman on the Kootenai County Republican Central Committee in 2008. I have worked on several subcommittees and have served as Vice Chairman under three Chairmen. I have served as a State Representative for four terms and have been mentored by legislators who have the wisdom gained by their many years of service. I have served as Vice Chair of two separate House Committees and have a good working relationship with the House leadership.

I will do my best to maintain a government that is lean, efficient, and serves the citizens without stifling taxes or limitations on their freedoms afforded by our country's founding principles. I am especially committed to ensuring economic freedom by promoting sound money, and prevention of programmable money and CBDC (Central Bank Digital Currency). I will also continue to work toward medical freedom.

Answer to Question 2, p. 3

Immigration Issues

Just one facet of the illegal immigration problem is in the realm of education. The state is required by a Supreme Court ruling to educate all children, regardless of immigration status. Recent attempts by the legislature to merely get a count of these individuals in the education system have been unsuccessful. We do not know how much the education cost is borne by Idaho taxpayers because of this unfunded mandate from the Federal government.

Other impacts that illegal immigration have on Idaho are in the areas of violent crimes, medical costs, housing prices, and the costs of incarcerating illegal immigrants in our jails and prisons.

Drawer Vetoes

There are several Legislative Committees where the chairman will not allow a bill to be heard. While there may be rare instances

where this may be necessary, this procedure is used too frequently. When this occurs, the chairman wields more power than the governor. If the governor vetoes a bill, the House and Senate could at least attempt a veto override, which requires a two-thirds vote in both chambers. Conversely, a drawer veto prevents the public hearing and Committee discussion that is afforded to most bills. Sometimes, even if a bill appears to have shortcomings, it is possible to have it amended to make it a superior bill. I believe more stringent rules need to be developed to prevent this abuse of power.

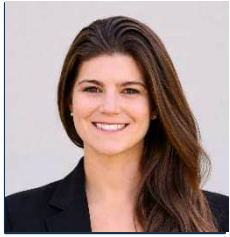
Fairest Form of Taxes

There are four basic categories of taxes: sales tax, income tax, property tax, and inflation tax. The taxpayer is presented with the "tax bill" for each of these taxes as follows. Sales Tax: every time you make a purchase you know what is owed for the tax. Income Tax: you know what you owe for this tax once a year and have a reasonable estimate of the tax owed long before April 15. Property Tax: you receive an annual statement of the taxes due. Inflation Tax: you are never presented with the tax bill. The National Debt now stands at \$39 Trillion, and as a taxpayer, your share to pay off this debt is over \$350,000! Congress has figured out that whoever promises the most benefits to the voters will get elected, but they never tell us what the "tax cost" will be. The increase in the money supply, which is the definition of inflation, causes prices to rise. Wages always lag behind the increased cost of living, even using the government's undervalued Consumer Price Index.

So, the worst tax is inflation, because we never see it or get to vote against it by electing the politicians who should be controlling it. The next worst tax is property tax because you never own your property outright. Especially hard hit are the elderly who are on fixed incomes that don't keep up with the cost of living. The fairest tax is the sales tax, where you can at least minimize your tax owed by conscious spending reductions.

The following County candidates received the KCRCC Recommendation

☑ Julie Hensley



Running for: Kootenai County
Commissioner, District 1

Email: hensley.juliern@yahoo.com

Phone: (714) 519-1005

Party Affiliation: Republican



Answer to Question 1, p. 3

My name is Julie Hensley, and I am running for District One County Commissioner to preserve the character, safety, and quality of life that make our community such a special place to live and raise a family. With rapid growth in Kootenai County, the decisions we make today will shape our future. I am committed to protecting what makes this community strong.

I am qualified through real-world experience and a lifetime of fiscal accountability. As a registered nurse, I have learned to think critically under pressure, make decisive choices, and advocate for those who cannot speak for themselves. As a small business owner and commercial property owner, I understand the challenges of overregulation and the importance of managing complex budgets responsibly. I have lived my life practicing financial discipline, saving carefully and investing wisely, and I will bring that same stewardship to county government. I understand that cutting corners today can cost more tomorrow. I know how to distinguish between unnecessary spending and smart, long-term investment.

If elected, I will focus on supporting responsible growth, protecting taxpayers, and ensuring local government operates efficiently and transparently. Our Comprehensive Plan needs to serve as a legally sound foundation for our future and to implement an infrastructure first approach. This means ensuring that roads, water services, and jail capacity lead development rather than chasing it. I will advocate for small businesses, prioritize public safety, and make informed decisions by working closely with county departments and listening to the community.

Answer to Question 2, p. 3

Fiscal responsibility is the cornerstone of responsible governance. It is a principle I have practiced throughout my personal life and throughout my role as a small business owner. Operating a business provides firsthand experience in the necessity of a balanced budget, teaching how to distinguish between wants and needs and ensures that every investment yields a tangible benefit. I will bring that same disciplined mindset to the county, treating every tax dollar with the utmost respect and recognizing that these funds belong to the people, not the government. My lifelong dedication to conservative financial principles means living within our means, avoiding unnecessary debt, and ensuring total transparency. By managing the public budget with the same precision required to keep a private enterprise thriving, I will work to protect our county's financial future while preserving the quality of life we all cherish.

Kootenai County is at a pivotal moment. The growth we are experiencing today will define our community's character, culture, and way of life for generations to come. As a County Commissioner, I believe we have both an opportunity and a responsibility to ensure that growth is guided thoughtfully, not rushed, nor reactive.

Our Comprehensive Plan is one of the most important tools we have. It must reflect the vision of the people who live here, not just the pressures of rapid development. This is our legal and practical path to preserving what makes Kootenai County such a special place to live, work, and raise a family.

Right now, our infrastructure is already feeling the strain. Roads are congested, schools are reaching capacity, our jail system is pressured, and our water resources require careful protection. Growth cannot continue to outpace the systems that support it. Infrastructure must lead development, not follow it.

Public safety must remain a top priority. That includes both law enforcement and the long-term reliability and safety of our water systems. These are not areas where we can afford to fall behind or cut corners.

Equally important is how decisions are made. Land use policies should be clear, consistent, and predictable. We must eliminate vague or obscure regulations that create uncertainty for residents and property owners alike. Transparency is essential, and meaningful public input must be a cornerstone of every major decision.

The future of Kootenai County should be shaped by the people who call it home. My commitment is to protect our county's character and ensure decisions made today truly reflect the will of our community.

Fair and accurate elections are the foundation of our Republic. I believe every single Kootenai County voter deserves to know their ballot counts and their voice is heard. That means full transparency in our election process, strong chain of custody procedures, and real accountability at every step. This isn't a partisan issue. It's an American issue. Every fraudulent vote cancels out a legitimate one, and that is simply unacceptable. Election integrity starts locally, and I will fight to protect it here at home.

✓ Bruce Mattare



Running for: Kootenai County
Commissioner, District 2

Email: bruce@bruceforcommissioner.com

Phone: (208) 225-6696

Party Affiliation: Republican



Answer to Question 1, p. 3

As your current county commissioner, I am running for re-election because I care about preserving the high quality of life in our community and ensuring that county government reflects your values and priorities.

My qualifications come from a combination of real-world leadership, business experience, and public service involvement. I've built and managed a successful company with nearly 200 employees, giving me firsthand experience in budgeting, operations, and accountability. My background in business development, finance, and technology equips me to make data-driven decisions and implement effective policies.

If elected again, I will continue to focus on practical, results-oriented improvements. These include managing growth responsibly so it does not outpace infrastructure and services, and maintaining strong public safety standards while keeping taxes under control. I believe in transparent, numbers-based decision-making so residents understand how and why decisions are made. Ultimately, my goal is to ensure that our county remains a safe, well-managed, and desirable place to live while preserving the character that makes it unique.

I would like to think that my policy platform, voting record and public engagement as your current county commissioner speaks for itself. I will continue to hold townhalls on important subjects, speak at public gatherings and answer any question about my voting record and/or policy platform. Ultimately, I represent all of the citizens of Kootenai County and report to them. I hope to continue to earn your support.

Answer to Question 2, p. 3

My policy positions reflect a consistent philosophy centered on limited government and fiscal discipline while demanding transparency and accountability for taxpayers.

Fiscal Responsibility in Kootenai County

A top priority is keeping taxes low by ensuring growth pays for itself rather than shifting the cost burden onto current residents. Greater efficiency in government is essential—that is “doing more with less government staff”—while maintaining service levels. Fair cost allocation must also be enforced so county taxpayers are no longer subsidizing other jurisdictions. This approach reflects a business-minded, results-driven commitment to accountability and responsible budgeting.

Growth in Kootenai County

Growth is inevitable, but it must be managed responsibly. The focus is not on stopping growth, but on ensuring it does not outpace infrastructure or drive-up costs for existing residents.

Unchecked development places strain on roads, basic services, schools and public safety (all affecting your total taxes). Policies should require growth to pay for itself, protecting taxpayers (you) while preserving the quality of life that draws people here.

Transit Center

Concerns exist about fairness in how our transit system is funded and managed by the county. County taxpayers are contributing to a service they are not using, especially when those services benefit city residents. A more equitable approach would align costs with the cities who directly benefit. Having joint powers agreement protects against two commissioners deciding to connect to Spokane (which I'm against).

Election Integrity

I believe that trust in government depends on transparency and accountability. Election systems must be secure and consistently applied so the public has confidence in outcomes. Strong oversight and open processes are essential to maintaining that trust.

Data Centers

Idaho prohibits an industry from being banned. I'm currently working on ordinances that will restrict a business' ability to impact negatively on residents. In the case of Data Centers, that would include power rates, water and quality of life.

The Fairest Form of Taxation

The fairest system prioritizes fees for service over taxpayer subsidies. Ensuring proper fees for services and preventing county government from subsidizing other taxing jurisdictions is critical, as is ensuring that those who create costs—such as new development—are responsible for paying it. This aligns taxation more closely with actual use and impact, protecting you from unnecessary tax burdens.

Aquifer Protection

Protecting the aquifer is essential for long-term sustainability. Responsible growth plays a direct role in safeguarding both water quality (and quantity). Managing development carefully helps prevent overuse and contamination, ensuring this critical resource remains available for future generations.

Land Use Laws

Land-use policy should balance private property rights with infrastructure capacity and community impact. Thoughtful planning helps prevent overdevelopment, reduces conflict, and preserves the character of the county. Maintaining local control is key to ensuring decisions reflect the needs and values of the residents most impacted by these decisions.

You can see more about my policies and work as your current county commissioner at www.BruceForCommissioner.com.

✓ **Duke Johnson**



Running for: Kootenai County Commissioner, District 2

Email: ariosduke19@gmail.com

Phone: (208) 500-0601

Party Affiliation: Republican



Answer to Question 1, p. 3

I'm running for the office of Kootenai County Coroner to continue to protect the citizens of Kootenai County by providing accurate determination of the cause of death for coroner cases through performance of thorough and meticulous investigations of each case. I'm qualified because I am the current coroner of Kootenai County and have received national certification as a Registered Medicolegal Death Investigator by the American Board of Medicolegal Death Investigators. We're in the midst of creating a forensic center in Kootenai County and I desire to complete this project and assure that it is operational at the highest of standards maintaining our prestigious national accreditation which was obtained during my first year in office. When we received national accreditation, we were only the 47th coroner office out of 2000 in the nation to receive this award. We operate at the highest possible national standard and my desire is to make sure we continue to do so. Once we have finished remodeling our building scheduled to be completed this Fall of 2026, we will open it as the Kootenai County Coroner and Regional Forensic Center accepting cases from other counties in Idaho thus enhancing their quality and helping keep Idaho tax payer dollars in the State of Idaho.

Answer to Question 2, p. 3

1) Fiscal Responsibility in Our Department - We work diligently to remain under budget each year I have been in office. My first year in office we slightly exceeded budget with unexpected expenses but we have been under budget since. The current expansion and remodeling of our office to become a regional forensic center is being funded by extra interest money obtained through county investments devoted to infrastructure and not by taxing our citizens. Knowing that we were anticipating to open a forensic/autopsy center soon, we hired our latest death investigator who was also trained as an autopsy assistant thus saving us from hiring an additional employee. Once we open the Kootenai County Coroner and Regional Forensic Center, we expect to receive autopsy requests from other North Idaho counties and beyond which would help offset our operational costs. I will continue to always focus on reducing the tax burden on our citizens as much as possible.

2) Growth in the County - I believe it is critical for us to maintain careful safeguards preventing unlimited or rapid growth further burdening our infrastructure and way of life. I'm a true native of Idaho being born and raised here. In fact, my family lineage can be traced back to when Idaho became a state. I'm passionate about preserving our uncongested way of life as well as our priceless natural resources. Growth must be carefully managed for Idaho to remain one of the most beautiful and wonderful places to live on earth.

The above information has been provided by the candidates

Election Integrity - This is a straight-forward and simple concept in my opinion. Just as I don't have the right or authority to instruct or control how people in another state or country are governed, neither should someone from another state or country have that right to control how we live.

✓ **Carlos Zamora**



Running for: Kootenai County Treasurer

Email: carloszamora11@hotmail.com

Phone: (917) 789-3647

Party Affiliation: Republican



Answer to Question 1, p. 3

I would like to offer my time and expertise to helping the Kootenai County Tax Payer. The County Treasurer position is very similar to the current position I hold at First Abu Dhabi Bank USA. I am a revenue-generating financial executive.

Extensive Financial Leadership: Over 40 years of experience in global banking and financial markets.

Executive Management: Serves as Executive Director Head of Asset and Liability Management for First Abu Dhabi Bank USA, overseeing funding strategy and liquidity management.

Proven Revenue Generation: Grew departmental revenues from \$4 million in 2016 to \$50 million in 2025.

Answer to Question 2, p. 3

Fiscal Responsibility in your Department - As a County Treasurer, one of our primary goals is to manage the county's cash balances as safely as possible as well as to grow revenues by investing wisely and prudently as to minimize the tax burden of our community. If we can add value revenue generation to lessen the fiscal burden of the county that would be one of our main goals as an elected official.

Growth in the County- Growth is a double edged sword. Currently, the county is growing at a rate that continues to stress the resources available. There is a need to look at ways to grow at acceptable levels where costs are shared by all and not just by the individual tax payer.

Transit Center- Low-cost public transportation is a must, but cost has to be shared equally by the cities that it serves. The burden of running public transportation should not fall to Kootenai County alone. Some suggest connecting to Spokane in order to share costs, but doing so would allow Spokane's issues (crime and homelessness, etc.) to travel here via our public transit system.

Election Integrity - We are a Constitutional Republic and our voting rights are being assaulted by the Left. Election integrity is a must if we are to survive the onslaught of voter fraud. A perfect example is to look at the great state of California.

Data Centers- AI expansion is here to stay. The question again is: Who is going to share in the massive energy costs needed for

It has not been verified for accuracy by the County.

such projects? The burden should not fall on state, county, or local governments alone. Jobs creation—that many in private industry promise for such projects should not be the only incentive. Cost sharing needs to be in the equation.

Fairest Form of Taxes- Taxes are a necessary burden that we cannot change. I am not a proponent of sales taxes because they are used as a short-term solution to solve bigger, sometimes never-ending problems. A VAT or Value Added Tax is based on consumption that is specifically tied to our tourist industry. It is one tax that needs to be researched and explored. In my opinion, 2026 and 2027 are going to be difficult years on the revenue side of the balance sheet. This stress is going to be felt across many services provided by the county. I will work with our local legislators to create ways of easing this burden by looking at state-approved revenue sources. In addition, I will be researching other sources to bring revenue to our county. This is exactly what I have been doing for the last ten years for First Abu Dhabi Bank. I enjoy this work and I do not want to see a dependence on Real Estate taxes as our main revenue source.

Aquifer Protection-Is a must going forward. We all know that clean water is a scarce resource and needs to be protected.

Land Use Laws - We need to protect and to enforce these laws. Residential expansion is all well and good, but the growth has taken a toll on our prairie. Laws need to be at an acceptable level where benefits must be weighted against costs.

Jennifer Locke



Running for: Kootenai County Clerk

Email: lockeforclerk@gmail.com

Phone: (208) 771-2206

Party Affiliation: Republican



Answer to Question 1, p. 3

It has been a privilege to work alongside the dedicated employees of the Clerk's Office, and I am proud of all we have accomplished together for the citizens of Kootenai County. I would be honored to continue serving the citizens of Kootenai County for another term as County Clerk.

Appointed Chief Deputy Clerk of Kootenai County by former Clerk Jim Brannon in 2017, I served in this role for six years before being elected as Kootenai County Clerk in 2022. Prior to my service in county government, I founded and operated a small online business for eight years, selling a USA-manufactured product to individual and corporate customers and fulfilling customized orders ranging from 100 to 1,300 units. I also hold a BA in Economics.

The Clerk's Office oversees five departments — Auditor, District Court, Elections, Recorder, and County Assistance — and is comprised of 106 employees. I possess the experience and knowledge to manage 106 employees, oversee the budget

process, administer elections, and fulfill the diverse responsibilities of the Clerk's Office successfully.

One of my top priorities has been the ongoing improvement of the County budget process, with special emphasis on strengthening the analysis of annual revenue projections. The Auditor's Office now conducts detailed reviews of three-year revenue and expense trends for every department. Working closely with the Board of County Commissioners, we have streamlined and enhanced the budget process each year, resulting in greater transparency and more effective use of taxpayer dollars for Kootenai County residents.

Answer to Question 2, p. 3

Fiscal Responsibility in Your Department

Each year, my department heads and I review by line item the previous year's budgets before preparing the next fiscal year's budget to study expense and revenue trends and either reduce expense line items or increase revenues where we can. We monitor our budgets by line item throughout the year. I emphasize to all my departments that we work for the taxpayers and citizens of Kootenai County. Our mission is to operate efficiently and cost-effectively while delivering excellent customer service that best serves the people of Kootenai County.

Election Integrity

As Clerk, I have spearheaded efforts to improve security and election processes in our County of over 110,000 registered voters. We will continue to live-stream on the County website so citizens can watch the opening of absentee ballots, ballot counting, uploading of results, and the location where voted ballots are secured and stored. In 2024, we also installed a dedicated camera over the Elections Office absentee drop slot, where ballots are deposited and secured into a locked box inside the Elections building—this is the only drop location for absentee ballots in the County.

The Elections Office has increased efficiency while managing more contested races, conducting elections for 52 taxing districts, navigating increased complexity in elections and election laws, and experiencing higher turnout. The department recruits and trains between 400 and 525 poll workers to staff 74 precincts on Election Day.

Here are some state laws and requirements for conducting elections in Idaho. All Idaho counties conduct voting on paper ballots. Proof of acceptable ID and proof of residence must be provided at the time of registration or prior to casting a ballot. In Idaho, voters must request and complete an absentee ballot application each new election year to receive an absentee ballot. When absentee ballots are returned to the Elections Office, each signature on the return envelope is verified by a human eye and matched against the voter registration signature on file; the signatures must match to be accepted. Idaho Code 34-2410(3) states: No vote tally system shall be connected to the internet at any time, and no vote tally system shall receive or transmit data through wireless communications.

Since 2022, the Secretary of State has been required to conduct audits of counties statewide for the May Primary and November General Elections. In 2022, Kootenai County was selected for the audit of the May and November Elections. Random precincts were drawn from the Secretary of State's Office for each audit,

and over 2,100 ballots in the May Primary and over 2,400 ballots in the November Election were audited. The results of the hand-tally audit of ballots cast in Kootenai County matched exactly the tabulation results reported in both elections.

Elections and election laws continue to evolve, and the Elections Office has consistently adapted to these changes with excellence. Election security, rigorous testing, thorough training, and maintaining a strict chain of custody over ballots and election equipment will continue to be among our highest priorities.

The following LEVY information will not appear on all ballots, but only on those to which it applies.

Kootenai Fire & Rescue

TEMPORARY LEVY OVERRIDE

Shall the Board of Commissioners of Kootenai County Fire & Rescue be authorized and empowered to certify an additional temporary levy of up to Five Million Two Hundred Thousand Dollars (\$5,200,000) per year for two (2) years in excess of the District's base budget from property taxes, for fiscal years beginning October 1, 2026 and ending September 30, 2028, for the purpose of defraying the cost of equipping and maintaining the District?

Current Levy (per \$100k): * \$ *not provided*
Proposed Levy (per \$100k): * \$ 37.77

Levy amount, per year: \$ 5,200,000

* Multiply this amount times the taxable value of your property, divided by 100,000.

Funds used to:

1. **Maintaining Rapid Response:**
Ensuring that temporary closures do not happen, keeping help close to your home.
2. **Boots on the Ground:**
Funding the personnel required to keep pace with the thousands of new residents entering the district.
 - The 3% Gap: Under Idaho law, fire district budgets are capped at a 3% annual increase. However, call volumes and the costs of life-saving equipment are rising much faster.
 - Inflation's Impact: In 2019 a firetruck cost \$600k, today it costs over \$1 million dollars. In six years, the cost has doubled.
 - Response Times: When every second counts, during a cardiac arrest or a structure fire, distance and staffing are the only things that matter.
 - Staffing Pressures: To keep every station open and every engine staffed 24/7, it is needed to retain and support our frontline firefighters.

This levy override requires any number greater than 50% of voters casting ballots in order to be approved.



The following candidates for Federal and County office participated in the KCRCC Rating and Vetting process but DID NOT OBTAIN the >50% Committee votes needed to secure the KCRCC Recommendation.

Federal:

Denny LaVe

Running for: US Senator
Email: dennylave@gmail.com
Phone: (208) 660-5223
Party Affiliation: Republican



Vetting Questionnaire:
<https://www.kootenaigop.org/denny-lave>

Campaign Website:
<http://dennyforsenate.com>

X:
DennyForIdaho

Joshua Roy

Running for: US House of Representatives, District 1
Email: joshroyforidaho@outlook.com
Phone: (208) 750-6546
Party Affiliation: Republican



Vetting Questionnaire:
<https://www.kootenaigop.org/joshua-roy>

Campaign Website:
<http://joshroyforidaho.com>

X:
joshuaroy20354

County:

John Padula



Running for: Kootenai County
Commissioner, District 1

Email: pastorjohn@altarcda.com
Phone: (208) 704-1492
Party Affiliation: Republican

Answer to Question 1, p. 3

I'm running for this position to put public service back into office. Politicians make empty promises and look out for themselves while public servants represent the people by whom they were elected.

I believe what makes me qualified is the fact that I was born and raised in North Idaho and have a unique perspective and individual experience dealing with a lot of the departments represented by the BOCC. Furthermore, from 2006 to 2008 I was responsible for the oversight of 42 properties with over 60 tenants. For the following five years, I worked for Rocky Mountain Insulation/E3. I managed an office in Coeur d'Alene and traveled to several different states helping the company establish many more successful offices. At that time, I transitioned into ministry. I have been on the Board of Directors at the Altar Church for 12 years, dealing with the finance and administration of the church, my wife and I started a 501(c)(3) in 2012, I've been on the Board of Directors for CCA since 2021, and have been on several boards in the last 15 years. I have business experience, experience with finance and administration, and for the last 18 years I have served this community faithfully.

If elected, a top priority is to bring civility back into politics. A kingdom divided amongst itself will not stand. That's what will happen to our community if we continue to divide ourselves amongst ourselves.

Answer to Question 2, p. 3

I believe in being fiscally responsible. When dealing with taxpayer money, it is important that we are good stewards of it. As the county continues to face financial challenges, it's important that we make financially conservative decisions moving forward. The foundation being the areas that are mandated by the state, followed by community needs, and if necessary, cutting items that are not beneficial to the community.

I am opposed to connecting transit to Spokane. With my background, and dealing with the demographic of people I deal with every day, we do not want to make it easier to have an influx of drugs or crime into our county. We also do not want to make it easier for those in our community who are struggling with addiction, or even runaways, to disappear across the state line.

Election Integrity is a must! What we have witnessed across the

country in the last several years is very alarming. It is important that we do everything in our power to make sure that there is no voter fraud in Kootenai County. Our County Clerk has done a great job so far, but as we continue to grow, it may be more difficult in the future. If we had the manpower and the finance, without an extra burden on the taxpayers, I would support paper ballots and hand counting.

As Kootenai County continues to face the challenges that come with growth, it is important that we keep an eye on our infrastructure and resources. Our resources are not unlimited.

I do not have a stance on the fairest form of tax, other than the fact that property taxes are not the answer. This needs addressed at the State level, however I am in support of getting rid of property taxes, and fighting to figure out a way to subsidize them with a flat tax, user tax, or even a higher sales tax. At the very minimum, if we cannot get rid of property taxes altogether, I support no property taxes once a person retires or when they pay their house off.

Steve Em



Running for: Kootenai County
Commissioner District 2

Email: emsteven@yahoo.com

Phone: (702) 912-6634

Party Affiliation: Republican

Answer to Question 1, p. 3

I am running for Kootenai County Commissioner District 2 To provide the constituents of Kootenai County with better transparency, integrity, and truth. No backroom deals and no Non-Disclosure Statements. Provide the people with the ability to control a budget that is currently not sustainable.

My qualifications for commissioner involve over 2 decades of service to the largest Probation Department in the United States. Placed at Probation Headquarters in Los Angeles, I had the ability to work in Exams and Recruiting, Human Resources, and Fiscal Budgetary Services. Other positions have include Juvenile and Adult Services, Narcotics, Gang Unit, and Adult and Juvenile Investigations.

If elected the improvements I would implement would be to stop the division being created by sitting politicians and bring the community together. A community together is a more well informed community. Other improvements I would make would be to make myself accessible to constituents in the Worley Community Center, create a digital channel for my constituents regarding issues they need to understand, and keep taxes as low or comparably low compared to other counties.

Answer to Question 2, p. 3

Growth: Everyone speaks of responsible growth. That deals with the speculation of excessive population growth, all the while attempting to keep its rural character, natural resources, and infrastructure capacity. Unchecked urban sprawl is what we do not wish for in Kootenai County. Therefore, focusing on aquifer

protection, sustainable development, and quality of life for residents is a priority as a County Commissioner.

Aquifer Protection: This is a subject near and dear to me. The Rathdrum Prairie Aquifer services over 500,000 people and has over 10 trillion gallons. The integrity of it is foremost and the security of it is shared by 2 states. Without it, people would die and a region would collapse economically. I come from an area in Los Angeles where Jet Propulsion Lab (JPL) is housed. Jack Parsons was the head scientist that has it built in the 1930's using steel tanks to house carcinogenic chemicals because he was the forefather of modern jet fuel. Those tanks leaked and the entire region around Pasadena, California, has the biggest lymphoma rate per capita in the US. I do not want that aquifer polluted by any chemicals. That is why I am closely working with a wastewater expert from Spokane in regards to this issue and am being advised by them. I would gladly work with other experts from federal to city/county to propose ways to keep the aquifer clean.

Transit Center: This issue revolves around the ability of Post Falls, Hayden, and Coeur d'Alene to fully assume responsibility of such center to service their citizens that need transportation. My belief is that the county would be overburdened financially in assuming responsibility financially and physically for a large bus system. I believe in making government smaller, not bigger.

Teresa Mallery



Running for: Kootenai County Treasurer

Email: Teresa4idaho@gmail.com

Phone: (208) 659-1340

Party Affiliation: Republican

Answer to Question 1, p. 3

I am running for Kootenai County Treasurer because I believe this office should remain steady, professional, and focused on protecting taxpayer dollars. After nearly twenty years serving inside the Treasurer's Office, I understand how important accuracy, internal controls, and responsible financial management are to the people of this county. I am running to continue the high standard of stewardship that taxpayers deserve.

I am qualified because I have worked in the office and understand the full scope of its responsibilities, from tax statements and payment processing to internal safeguards and coordination with county departments, banks, and vendors. I bring experience, institutional knowledge, and a commitment to doing the work carefully and correctly.

If elected, I want to continue improving efficiency, transparency, and service to the public. My goal is to make sure the office remains accurate, accessible, and fiscally responsible, while continuing to protect public funds with the same professionalism and stability that Kootenai County taxpayers expect.

Answer to Question 2, p. 3

The fairest form of taxes is one that is transparent, lawful, and predictable. Taxpayers should be able to understand what they owe, why they owe it, and where those dollars go. While the Treasurer does not set tax policy, I believe the office has a duty to help citizens understand their statements and trust the process.

Fiscal responsibility means treating every taxpayer dollar with the same care and discipline as a household budget -prioritizing essential services, avoiding unnecessary risk and ensuring long-term financial stability. As county treasurer, my responsibility is not just to manage money but to protect it, account for it and make it work efficiently for the public. That includes maintaining accurate records, ensuring strong internal controls and complying fully with state laws and audit standards.

Bela Kovacs



Running for: Kootenai County Assessor

Email: Bela4Assessor@gmail.com

Phone: (208) 274-3529

Party Affiliation: Republican

Answer to Question 1, p. 3

Assessment affects the entire community. My commitment is simple: Protect property owners by keeping assessments low, accurate, fair, uniform, and lawful.

The County loses all remaining IT institutional knowledge this summer by retirements. I initiated project Sympatico to fix the broken computer system. It is partially done, at a critical juncture, and it must be completed with continuity.

In 2020, Commissioners unanimously appointed me for my qualifications, education and nearly two decades experience in county administration. I kept the office open during COVID, led through transition and out of high retirements and computer instability.

In 2021, I renovated the DMV, which now operates with excellent reviews.

Elected in 2022, I implemented process improvements, system fixes, innovation, standardization and automation—reducing costs while improving accuracy, fairness, and transparency.

I'm a certified tax appraiser, with 40+ years of combined experience, I know the technical side of property valuation and have administered as Assessor for six years. I have a demonstrated record of leading a large team to deliver excellence in public service.

During publicized disagreements, I stood firm and successfully defended voter's rights to elect their assessor and defended assessor's independence— which are essential to ensuring equal treatment under the law, free from politics. Like others, I've had missteps, I've apologized, I've learned, and I've made corrections.

Kootenai County is growing rapidly. My goal is to complete the partially finished modernization, improve efficiency and deliver low, fair, accurate and transparent assessments.

May 19, 2026 vote Bela Kovacs Assessor to finish this important work.

Answer to Question 2, p. 3

My commitment is simple: protect taxpayers, protect our way of life, and keep government small and accountable to the People.

Fiscal Responsibility in the Assessor's Office: I will continue running a lean, efficient office that lowers costs while improving accuracy. Government must live within its means—just like families do. If I can raise a family of 12 children on a limited budget, then so can the government. Every dollar saved is a dollar that stays in the taxpayer's pocket.

Growth in the County: Kootenai County has experienced rapid growth, but it must be responsible. People move here for our quality of life, not to turn Kootenai County into the places they left. We must protect property rights while ensuring growth pays its own way and does not burden existing residents. Our local governments must administer operations in a way that reflects this public input.

Transit Center: Major infrastructure projects must be carefully scrutinized. If a project does not clearly serve taxpayers, reduce costs, or improve efficiency, it should not move forward. We should prioritize roads, public safety, and core services based on what the voters want—not on unnecessary expansion.

Election Integrity: Idaho has a verification of legal presence statute in I.C. § 67-7903. Benefits are rights due to legal citizenship. Free and fair elections are foundational. I support strict I.D. verification and confirmation of legal presence, voter roll maintenance, transparency, and accountability so only legal votes count.

Data Centers: The community has spoken clearly: protect our water, land, and rural character. Data centers pose serious risks to the Rathdrum Prairie Aquifer due to high water and power demands, which is why local leaders have imposed restrictions and even a moratorium. I stand firmly with protecting our natural resources.

Fairest Form of Taxes: Food and shelter are basic needs of life—they are not the piggybank for government programs. The fairest system is one that first respects the fundamental human needs, and after that, it must be fair, uniform, based on accurate valuations and transparent—not based on what someone earns or on politics. Idaho's Founding Fathers deemed it proper that government revenue be based on market value. If property tax system continues in Idaho, as Assessor, I'll work tirelessly to ensure low, but accurate, fair, uniform, transparent and level assessments that meet legal requirements.

Aquifer Protection: Water is our most precious resource. The Rathdrum Prairie Aquifer is essential to our health, economy, and future. Any policy or development that threatens it must be approached with vigilance and protection to preserve this essential and indispensable resource.

Land Use Laws: Land use decisions must respect private property rights while preserving the character of our community. Planning tools like Areas of Impact should guide coordination while respecting property rights and due process of law—not force unwanted development or annexation.

I will fight to keep taxes fair and low, protect property rights, defend our water and land, and ensure government remains transparent, accountable, and limited—true to the conservative values that define Kootenai County.

Allyson Knapp



Running for: Kootenai County Assessor

Email: allyson4assessor@gmail.com

Phone: (208) 274-5276

Party Affiliation: Republican

Answer to Question 1, p. 3

I'm running for Kootenai County Assessor because property owners deserve an office that is accurate, accountable, and led with professionalism. This position affects every taxpayer in Kootenai County, and I believe the Assessor's Office should be run by someone with real valuation experience, a strong understanding of the work, and the willingness to take responsibility and deliver results. I bring more than 30 years of experience in property valuation as a Certified Appraiser, former Chief Deputy Assessor, and local Realtor. I understand assessments, appeals, office operations, and the importance of meeting deadlines because delays in this office affect other county departments and the public we serve. If elected, I will work to restore confidence in the office by improving morale, customer service, consistency in valuation methods, and stewardship of taxpayer dollars. I believe leadership means owning the work, solving problems, treating people with respect, and making sure the job gets done right and on time.

Answer to Question 2, p. 3

Born and raised in Kootenai County, I have seen firsthand how much this county has grown and how important it is for the Assessor's Office to keep pace. The Assessor's Office does not create tax policy or make land use decisions, but it plays an important role in a growing county by valuing property fairly, accurately, and consistently under Idaho law. As Kootenai County continues to grow, the office must keep pace with new construction, property changes, segregations, plats, and market activity so records remain current and assessments are completed on time. After 30 years of appraising properties in Kootenai County, I know growth brings pressure to every part of this office, and keeping up takes experienced staff, solid processes, and leadership that follows through.

Land use laws are established through other parts of local government, but those decisions often affect property classification, use, and value. The Assessor's job is to understand how those changes apply under Idaho law, maintain accurate records, and ensure properties are assessed fairly and uniformly across the county. Just as important, the office must stay in its proper role by applying the law fairly and consistently, not by creating policy or treating similar properties differently.

Fiscal responsibility in the Assessor's Office means more than balancing a budget. It means having a clear plan, setting priorities, meeting deadlines, and making sure the office has the staffing, training, and tools needed to do the job right. State-required planning, responsible budgeting, reducing costly errors and unnecessary appeals, and improving day-to-day operations are all part of running the office well. I have helped build that kind

of plan before, and if elected, I will put that experience to work immediately to restore accountability, improve service, and make sure the office follows through on its responsibilities to taxpayers and taxing districts.

John Samuelson

Running for: Kootenai County Clerk

Email: 7ovc@mailfence.com

Phone: (208) 774-4673

Party Affiliation: Republican

No photo provided

Answer to Question 1, p. 3

A declaration: Henceforth to answer these essay questions I will refer to myself as "Candidate Samuelson" to avoid overusing personal pronouns.

> 1A. Why are you running for this office?

Short ANSWER: The first week in March 2026 Candidate Samuelson felt an un-mistakeable calling of God.

Longer, more elaborate ANSWER:

Candidate Samuelson thinks Kootenai County in general and certainly the Clerk's office in particular is going in the wrong direction when it comes to Information Technology (IT). We are LOSING LOCAL CONTROL at an alarming rate!

Candidate Samuelson would also hasten to point out that the real, tangible, paper_documents_in_metal_filing_cabinets paradigm which was very successfully implemented for the first century of Idaho/Kootenai County's existence, should also be thought of as "Fred Flintstone" or "classical" IT.

That "classical frozen data" IT versus "liquified data" approach (i.e. internet cloud IT services) has some huge advantages: 100% immune to viruses, ransomware, mal-ware, Electro Magnetic Pulse (EMP) data breaches and internet outages to name a few. Sweden to cite an example has done a 180 degree "about face" in public education: CELL PHONES ARE NO LONGER ALLOWED IN THEIR SCHOOLS!

As Candidate Samuelson understands it, (he has virtually attended budget meetings), about 75% of the County Clerks role is overseeing court records, 15% general records, 5% elections, 5% other. IT is central to the County Clerk's office.

Answer to Question 2, p. 3

> 1B. What makes you qualified to hold the position you are seeking?

ANSWER: An academic background in electrical engineering and a practical background in small business. Candidate Samuelson was never a dentist or accountant but Candidate Samuelson did create, maintain and file meticulous dental records and do his own payables, receivables, profit / loss and other necessary basic accounting in running his own computer business in the 90's and 2000's.

Over decades, Candidate Samuelson has programmed, coded, constructed and sold various computer systems and networks.

He understands their capabilities and limitations. Candidate Samuelson is a harsh critic of Artificial Intelligence (AI). He has never seen a Large Language Model (LLM) scheme that can satisfy the "Turing Test"- (i.e. is it fake or human).

Meanwhile ordinary Idahoans may soon be facing higher energy costs so "technocrats" can indulge their AI fantasies.

Candidate Samuelson has deep Idaho roots going back 4-5 generations and has lived in Idaho over 60 years.

> 1C. If elected to this position, what improvements would you like to achieve?

ANSWER: Candidate Samuelson concedes we cannot "turn-back-the-clock" completely to the old ways, yet we can re-assess and develop perhaps a hybrid system that is LOCALLY stored, hosted and CONTROLLED. Some minimalist paper? microfilm? backups should be implemented. EMP resilience is also an important goal.

ELECTION INTEGRITY unfortunately has become a HUGE issue in Kootenai County. Voters simply SHOULD NOT accept PUBLIC outcomes from proprietary "black box" tabulators with dubious reputations and PRIVATE source code. The only absolutely safe way is PAPER BALLOTS HAND COUNTED.

While Candidate Samuelson concedes that THIS approach is IDEAL from the standpoint of election integrity, he sees it as likely unpalatable politically by the powers that should not be.

A realistic compromise Candidate Samuelson favors: Put a dumb "image-scanner" in series (i.e. upstream) of the tabulators before ANY election data is "processed". That way any interested party(s) can get raw images and do their own auditing/hand counting. Candidate Samuelson also favors a unique serial number on every ballot. (This is how the alleged fraud in Tarrant County, Texas January 2026 was caught).



**RATED
VETTED
REPUBLICAN**

**VOTE MAY 19
OFFICIAL KCRCC
RECOMMENDED**

US SENATOR	IDAHO STATE SENATE SEAT FOR LD5
<input checked="" type="checkbox"/> JIM RISCH	<input checked="" type="checkbox"/> CARL BJERKE
U.S. REPRESENTATIVE DISTRICT 1	IDAHO STATE REPRESENTATIVE SEAT 5A
<input checked="" type="checkbox"/> RUSS FULCHER	<input checked="" type="checkbox"/> RON MENDIVE
GOVERNOR	IDAHO STATE REPRESENTATIVE SEAT 5B
<input checked="" type="checkbox"/> MARK FITZPATRICK	<input checked="" type="checkbox"/> TONY WISNIEWSKI
STATE CONTROLLER	COUNTY-SPECIFIC
<input checked="" type="checkbox"/> BRANDON WOOLF	KOOTENAI COUNTY COMMISSIONER DIST 1
STATE TREASURER	<input checked="" type="checkbox"/> JULIE HENSLEY
<input checked="" type="checkbox"/> JULIE ELLSWORTH	KOOTENAI COUNTY COMMISSIONER DIST 2
ATTORNEY GENERAL	<input checked="" type="checkbox"/> BRUCE MATTARE
<input checked="" type="checkbox"/> RAUL LABRADOR	KOOTENAI COUNTY CORONER
IDAHO STATE SENATE SEAT FOR LD1	<input checked="" type="checkbox"/> DUKE JOHNSON
<input checked="" type="checkbox"/> SCOTT HERNDON	KOOTENAI COUNTY TREASURER
IDAHO STATE REPRESENTATIVE SEAT 1A	<input checked="" type="checkbox"/> CARLOS ZAMORA
<input checked="" type="checkbox"/> JANE SAUTER	KOOTENAI COUNTY CLERK
IDAHO STATE REPRESENTATIVE SEAT 1B	<input checked="" type="checkbox"/> JENNIFER LOCKE
<input checked="" type="checkbox"/> CORNEL RASOR	KOOTENAI COUNTY FIRE / RESCUE LEVY
IDAHO STATE SENATE SEAT FOR LD2	<input checked="" type="checkbox"/> YES
<input checked="" type="checkbox"/> PHIL HART	Please be advised that NOT ALL candidates or measures will be on EVERY ballot. <i>Candidates and measures will appear on your ballot depending upon where you live.</i>
IDAHO STATE REPRESENTATIVE SEAT 2A	Candidates running UNOPPOSED will still appear on your ballot. Only candidates and measures supported by the KCRCC are shown here.
<input checked="" type="checkbox"/> HEATHER SCOTT	Be an INFORMED VOTER
IDAHO STATE REPRESENTATIVE SEAT 2B	See our signature Rating and Vetting Program at KCRCC.COM .
<input checked="" type="checkbox"/> DALE HAWKINS	Read Candidate questionnaires and our objective Voter Guide
IDAHO STATE SENATE SEAT FOR LD3	
<input checked="" type="checkbox"/> DOUG OKUNIEWICZ	
IDAHO STATE REPRESENTATIVE SEAT 3A	https://www.kootenaigop.org/voter-guide
<input checked="" type="checkbox"/> VITO BARBIERI	DON'T BE FOOLED
IDAHO STATE REPRESENTATIVE SEAT 3B	<i>The KCRCC is your ONLY local</i>
<input checked="" type="checkbox"/> JORDAN REDMAN	OFFICIAL Republican Party
IDAHO STATE SENATE SEAT FOR LD4	
<input checked="" type="checkbox"/> BEN TOEWS	
IDAHO STATE REPRESENTATIVE SEAT 4A	
<input checked="" type="checkbox"/> JOE ALFIERI	
IDAHO STATE REPRESENTATIVE SEAT 4B	
<input checked="" type="checkbox"/> ELAINE PRICE	